

## Han EMC Hood Side Entry M40

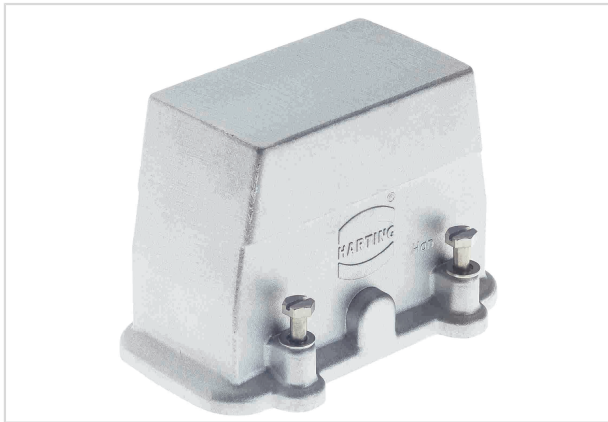


Image is for illustration purposes only. Please refer to product description.

Part number	19 62 064 0543
Specification	Han EMC Hood Side Entry M40
HARTING eCatalogue	<a href="https://b2b.harting.com/19620640543">https://b2b.harting.com/19620640543</a>

### Identification

Category	Hoods/Housings
Series of hoods/housings	Han <sup>®</sup> EMC
Type of hood/housing	Hood

### Version

Size	24 B
Version	Side entry
Cable entry	1x M40
Locking type	Screw locking
Field of application	Hoods/Housings for higher EMC requirements

### Technical characteristics

Limiting temperature	-40 ... +125 °C
Note on the limiting temperature	For use as a connector according to IEC 61984.
Degree of protection acc. to IEC 60529	IP65
Type rating acc. to UL 50 / UL 50E	4 12

### Material properties

Material (hood/housing)	Aluminium die-cast
Surface (hood/housing)	Uncoated
Colour (hood/housing)	Unpainted
RoHS	compliant



**Pushing Performance**  
Since 1945

## Material properties

ELV status	compliant
China RoHS	e
REACH Annex XVII substances	Not contained
REACH ANNEX XIV substances	Not contained
REACH SVHC substances	Not contained
California Proposition 65 substances	Yes
California Proposition 65 substances	Nickel

## Specifications and approvals

Approvals	DNV GL
UL / CSA	UL 1977 ECBT2.E235076 CSA-C22.2 No. 182.3 ECBT8.E235076
CE	Yes

## Commercial data

Packaging size	1
Net weight	390 g
Country of origin	Germany
European customs tariff number	85389099
GTIN	5713140132559
eCl@ss	27440202 Shell for industrial connectors